

# One Pitch at a Time

super fun songs based on the notes of the scale

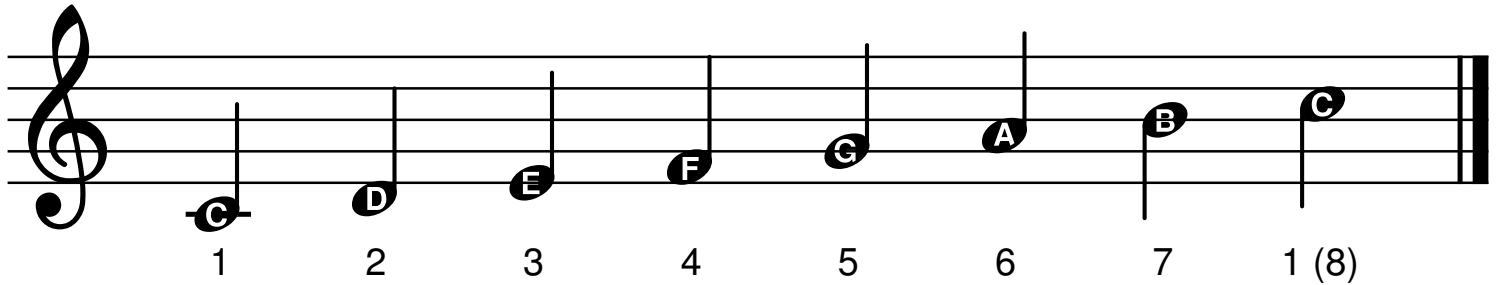
## *Part 1: Sol, Mi & La*

Compiled by Matthew Cline

# The C Scale

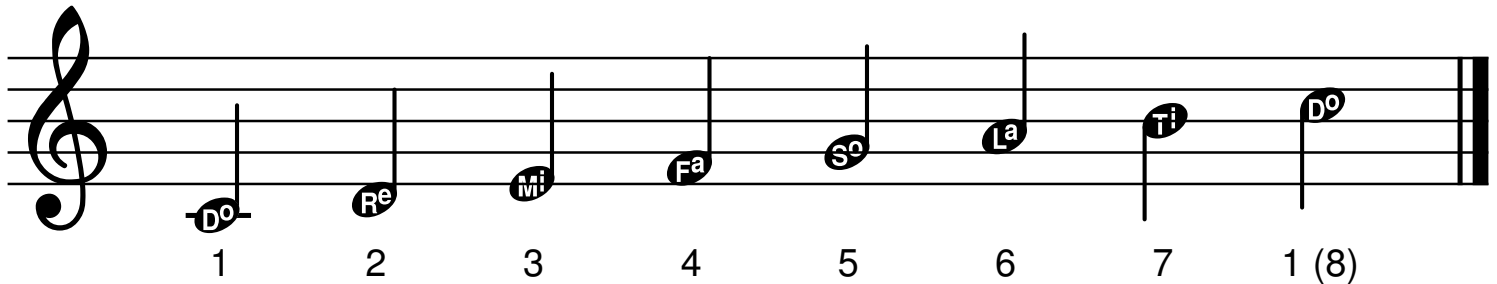
First, we will start by playing a C Scale.

## C Major Scale



A musical staff in treble clef showing the C Major Scale. The notes are C, D, E, F, G, A, B, and C. Each note is represented by a quarter note with a stem and a flag. The notes are labeled with their respective letters: C, D, E, F, G, A, B, and C. Below the staff, the fingerings are indicated by numbers 1 through 8. The first C is labeled '1', D is '2', E is '3', F is '4', G is '5', A is '6', B is '7', and the final C is labeled '1 (8)'. The staff ends with a double bar line.

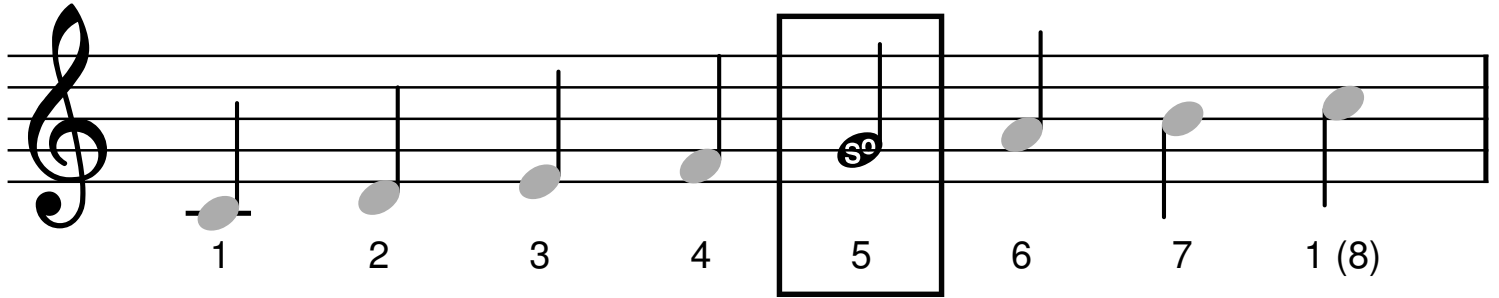
Now, let's look at the scale using solfège (Do, Re, Mi, Fa, Sol, La, Ti & Do)



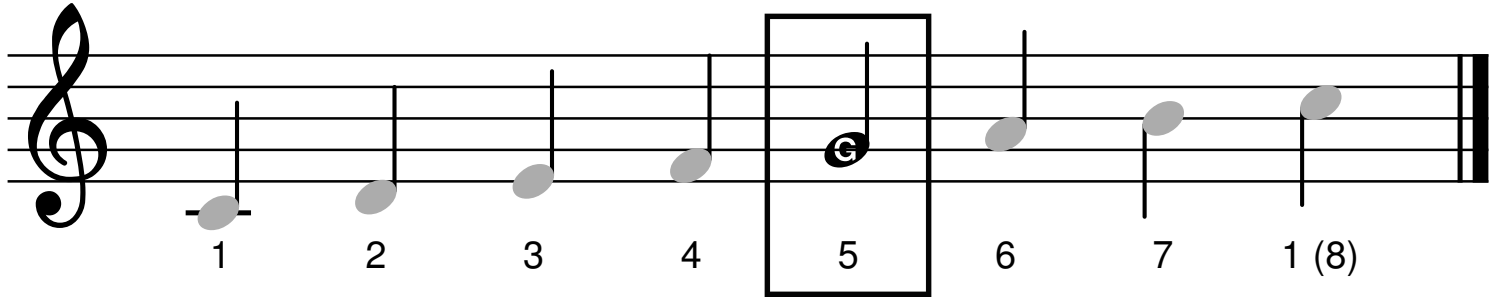
A musical staff in treble clef showing the C Major Scale using solfège. The notes are Do, Re, Mi, Fa, Sol, La, Ti, and Do. Each note is represented by a quarter note with a stem and a flag. The notes are labeled with their respective solfège letters: Do, Re, Mi, Fa, Sol, La, Ti, and Do. Below the staff, the fingerings are indicated by numbers 1 through 8. The first Do is labeled '1', Re is '2', Mi is '3', Fa is '4', Sol is '5', La is '6', Ti is '7', and the final Do is labeled '1 (8)'. The staff ends with a double bar line.

# First Note! "Sol"

We are almost ready to play a song! Our first note will be the 5th notes of the scale, "Sol".



In the C Scale, "Sol" is also the letter "G".

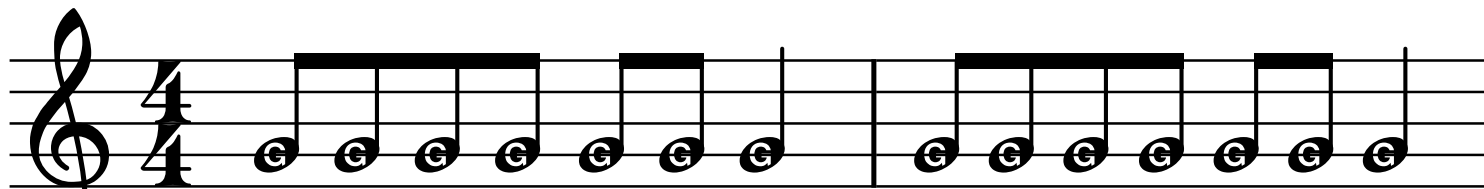


Tip: the "So" written inside the note is just short for "Sol"!

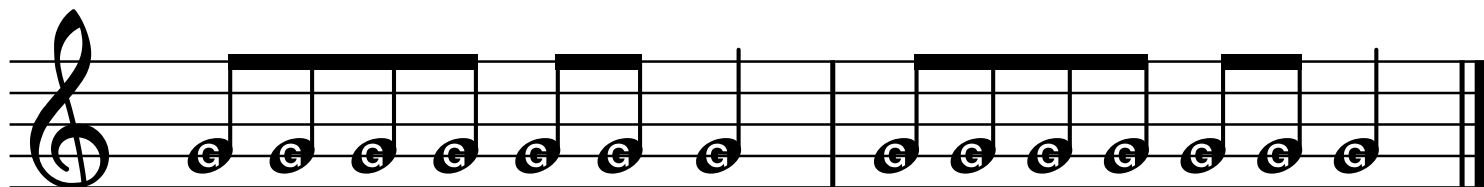
# First Song!

Notice that we can read the notes in this song as "G".  
(this is called the "letter name" of the note)

## Engine Engine Number Nine



En-gine, en-gine, num-ber nine      Go-ing down the L. A. line.



If it fol-lows the wrong track,      will I get my mo-ney back?

We can also read these notes as "Sol", because G is the 5th note of the C Scale.

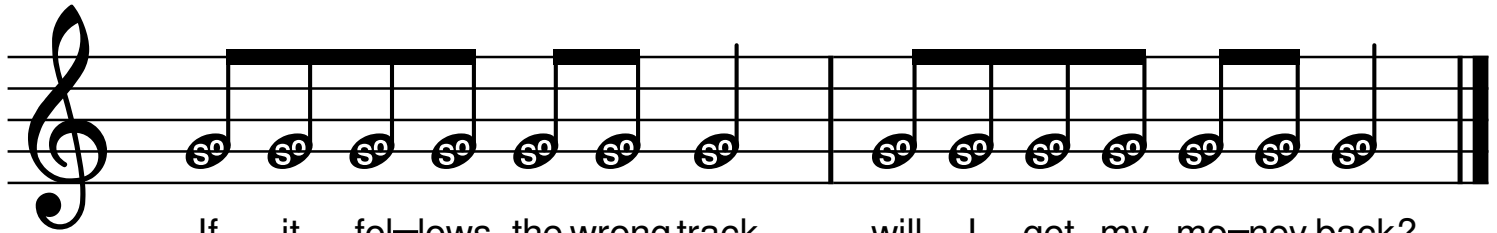
## Engine Engine Number Nine



The first line of music is written on a treble clef staff in 4/4 time. It consists of two measures. The first measure contains eight quarter notes, and the second measure contains seven quarter notes. Each note is marked with a circled 'S' below it. A thick black bar is drawn above the notes in each measure, indicating a continuous sound or engine noise.

En-gine, en-gine, num-ber nine

Go-ing down the L. A. line.



The second line of music is written on a treble clef staff in 4/4 time. It consists of two measures. The first measure contains eight quarter notes, and the second measure contains seven quarter notes. Each note is marked with a circled 'S' below it. A thick black bar is drawn above the notes in each measure, indicating a continuous sound or engine noise.

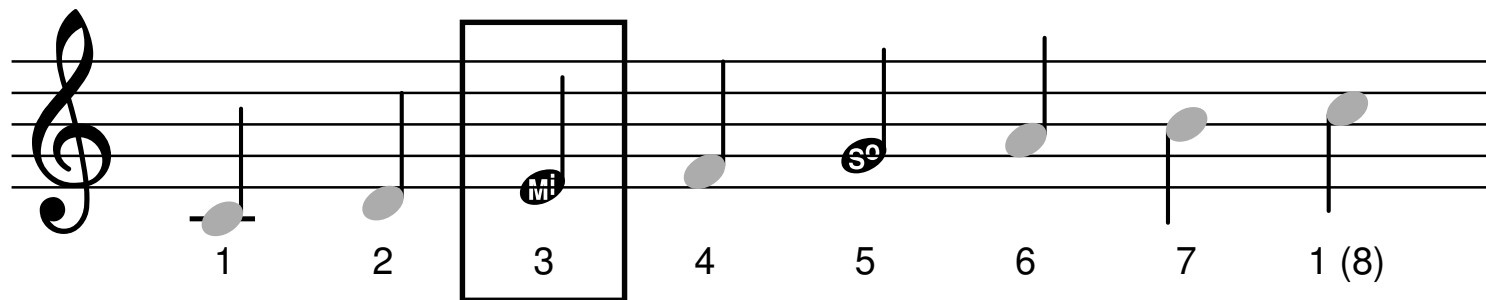
If it fol-lows the wrong track,

will I get my mo-ney back?

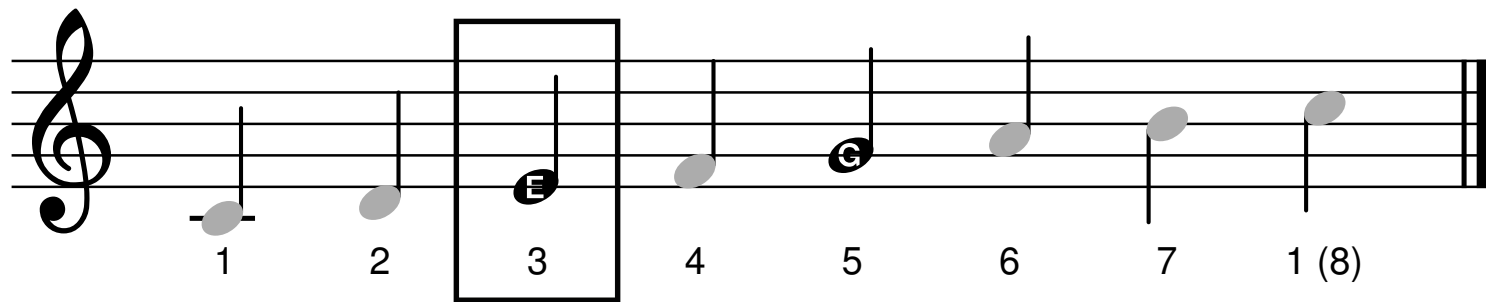
Tip: When we make a song with the notes of the C Scale, we call this playing in the "Key of C".

# The Note "Mi"

The second note we will learn is "Mi". This is the 3rd note of the scale.



In the Key of C, it is the letter name "E".



# Songs with "Mi"

The first song has the letter names ("G" and "E").

## See-Saw

The musical notation for "See-Saw" is written on two staves in 2/4 time. The first staff contains the first two measures: "See" (quarter note G) followed by a rest (quarter note), and "saw" (quarter note E). The second staff contains the next four measures: "Up" (quarter note G), "and" (quarter note G), "down" (quarter note E), and "In the sky and On the ground." (quarter note G, quarter note G, quarter note E, quarter note E). The notes are labeled with "G" and "E" to indicate the letter names.

See - saw Up and down  
In the sky and On the ground.

Tip: Look where the note heads are located on the staff.  
"E" will always be on the first line of the treble clef staff.

The second song has the solfège names ("Sol" and "Mi").

Try to play the song with no letter names!

## Star Light, Star Bright

Star light, star bright, first star I see to-night,  
Wish I may, wish I might, have the wish I wish to-night.

The image shows two staves of music in 4/4 time. The first staff contains the melody for the first line of the song, with lyrics 'Star light, star bright, first star I see to-night,'. The notes are marked with solfège names: Sol (G4), Mi (E4), Sol (G4), Mi (E4), Sol (G4), Mi (E4), Sol (G4), Mi (E4), Sol (G4), Mi (E4). The second staff contains the melody for the second line, with lyrics 'Wish I may, wish I might, have the wish I wish to-night.' The notes are marked with solfège names: Sol (G4), Sol (G4), Mi (E4), Sol (G4), Sol (G4), Mi (E4), Sol (G4), Sol (G4), Mi (E4), Mi (E4), Sol (G4), Sol (G4), Mi (E4). The piece ends with a double bar line.

Tip: See how "Sol" and "Mi" look the same as "G" and "E" for the songs we are playing.



# "Sol" & "Mi" Test

Now, see if you can play a song with no letter names OR solfège names! - Just the notes!

## Hey Hey Look at Me

The image shows two staves of musical notation in 2/4 time. The first staff contains the melody for the first line of the song, with lyrics 'Hey hey, look at me,'. The second staff contains the melody for the second line, with lyrics 'I am clap - ping, you can see!'. The notes are represented by black dots (noteheads) on a five-line staff. The first staff starts with a treble clef and a 2/4 time signature. The notes are: G (2nd line), E (bottom line), G (2nd line), G (2nd line), E (bottom line). The second staff starts with a treble clef. The notes are: G (2nd line), G (2nd line), E (bottom line), E (bottom line), G (2nd line), G (2nd line), E (bottom line). The piece ends with a double bar line.

Hey hey, look at me,  
I am clap - ping, you can see!

Remember: The "E" notehead is on the bottom line and the "G" notehead is on the second line from the bottom.

# More "Sol" & "Mi" Songs

## Frog in the Meadow



The first line of musical notation is on a treble clef staff with a 4/4 time signature. It contains two measures. The first measure has a quarter note on G4, followed by a quarter note on A4, and a quarter note on B4. The second measure has a quarter note on C5, followed by a quarter note on B4, and a quarter note on A4. A fermata is placed over the final note of the second measure.

Frog in the mea - dow, can't get him out,




The second line of musical notation is on a treble clef staff. It contains two measures. The first measure has a quarter note on G4, followed by a quarter note on A4, and a quarter note on B4. The second measure has a quarter note on C5, followed by a quarter note on B4, and a quarter note on A4. A fermata is placed over the final note of the second measure.

Take a lit - tle stick and stir him a - bout.

Tip: The symbol  $\}$  means to rest for one beat.

# Rain, Rain Go Away



Musical notation for the first line of the song. It features a treble clef and a 2/4 time signature. The melody consists of eight measures: a quarter note on G4, a quarter note on F4, a pair of eighth notes on G4 and A4, a quarter note on G4, a pair of eighth notes on G4 and A4, a quarter note on F4, a pair of eighth notes on G4 and A4, and a quarter note on G4. Lyrics are placed below the notes.

Rain, rain, go a-way, Come a-gain some oth-er day.

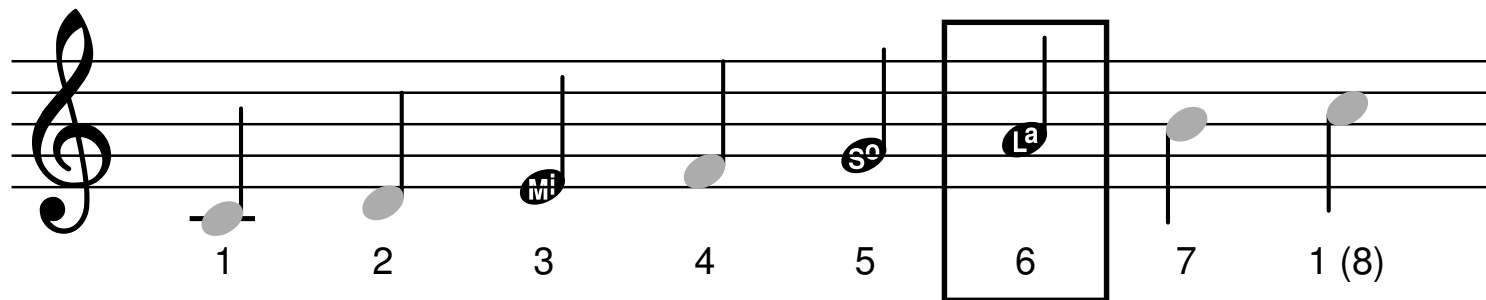


Musical notation for the second line of the song. It features a treble clef and continues the melody from the first line. The melody consists of eight measures: a pair of eighth notes on G4 and A4, a pair of eighth notes on G4 and F4, a pair of eighth notes on G4 and A4, a quarter note on G4, a quarter note on F4, a quarter note on G4, a pair of eighth notes on G4 and A4, and a quarter note on G4. The line ends with a double bar line. Lyrics are placed below the notes.

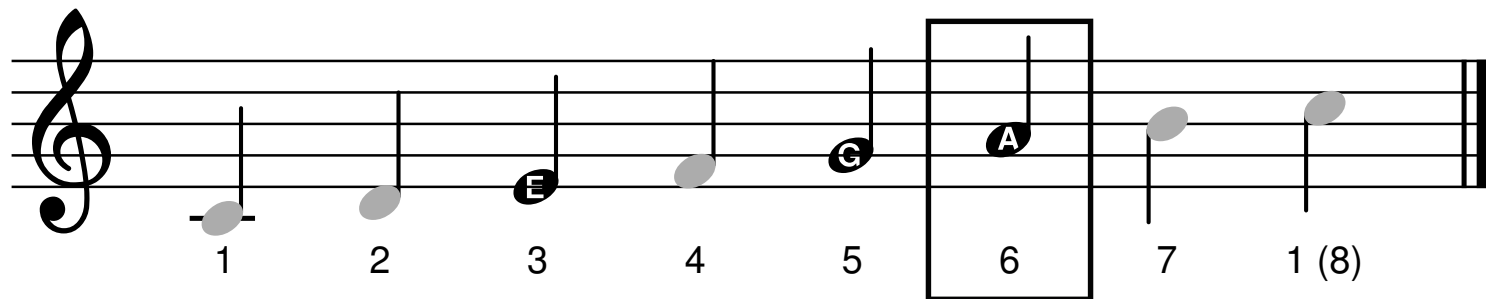
Lit-tle John-ny wants to play. Rain, rain, go a-way.

# The Note "La"

The next note we will learn is "La". This is the 6th note of the scale.



In the Key of C, it is the letter name "A".



# Songs with "La"

The following songs will have a new note, "A".

## Doggie Doggie Where's Your Bone

Dog-gie dog-gie where's your bone. Someone stole it  
from your home. Who stole your bo-ne? I stole your bo-ne.

Tip: See how the note "A" is in a space between two lines, but "G" and "E" have the line going through the note.

The next song has the solfège names for the new note, "La".

Do you remember which notes are "Sol" and "Mi"?

## Acka Backa Soda Cracker

Ack-a back-a so - da crack-er, Ack-a back-a boo.

Ack-a back-a so - da crack-er, Out goes you!

Reminder: You will treat the symbol  $\text{♩}$  just like a quarter note ( $\text{♩}$ ), except you don't play! This is called a quarter rest.

# "La" Test

Now, it's time to try to play "La" with just the notes!

## Lucy Locket

Lu - cy Lock - et lost her pock - et, Kit - ty Fish - er found it,

Not a pen - ny was there in it, just a rib - bon 'round it.

# More Song with "La"

## Bell Horses



Bell hor—ses, bell hor—ses, what's the time of day?

The first line of music is written on a single treble clef staff. It consists of three measures. The first measure contains a quarter note on G4. The second measure contains a pair of eighth notes on G4 and A4. The third measure contains a pair of eighth notes on G4 and F4. The lyrics are placed below the notes: "Bell hor—ses, bell hor—ses, what's the time of day?". The first two measures are separated by a vertical bar line, and the third measure ends with a fermata.



One o—clock, two o—clock, Time to a—way.

The second line of music is written on a single treble clef staff. It consists of three measures. The first measure contains a pair of eighth notes on G4 and A4. The second measure contains a pair of eighth notes on G4 and F4. The third measure contains a quarter note on G4. The lyrics are placed below the notes: "One o—clock, two o—clock, Time to a—way.". The first two measures are separated by a vertical bar line, and the third measure ends with a fermata.



# Duerme, Mi Tesoro



Musical notation for the first line of the song. It features a treble clef, a 2/4 time signature, and a melody consisting of eighth and quarter notes. The lyrics are: Duer-me, mi te - so - ro, duer-me, mi bi - en.

Duer-me, mi te - so - ro, duer-me, mi bi - en.

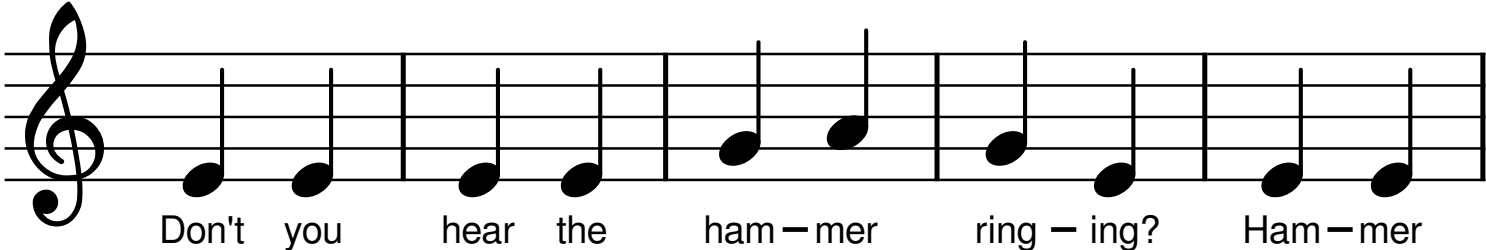


Musical notation for the second line of the song. It features a treble clef and a melody consisting of eighth and quarter notes. The lyrics are: Que los an - ge - li - tos, te mi - ran tam - bien.

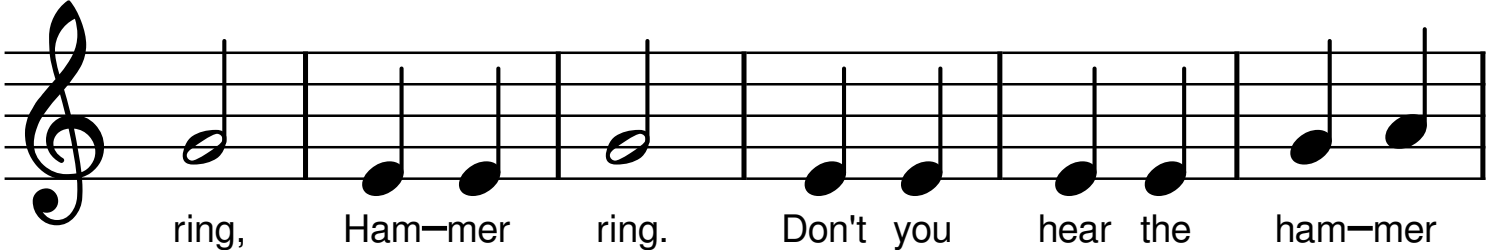
Que los an - ge - li - tos, te mi - ran tam - bien.

Translation: Sleep, my treasure. Sleep, my good one.  
Hope those angels, see you also.

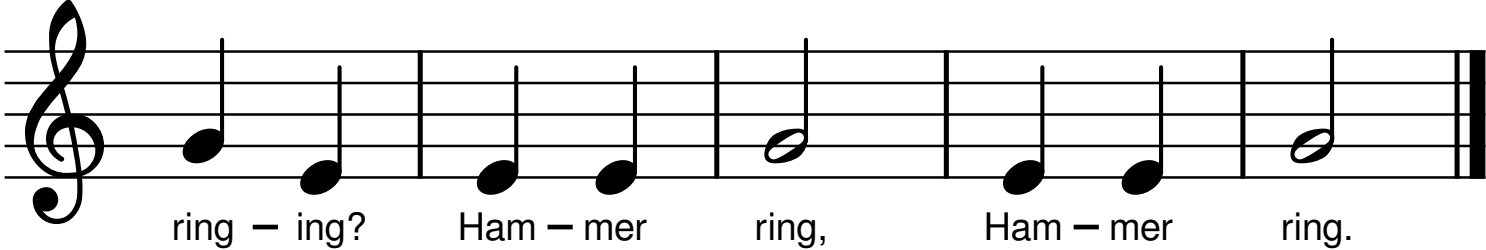
# Hammer Ring



Don't you hear the ham - mer ring - ing? Ham - mer



ring, Ham - mer ring. Don't you hear the ham - mer



ring - ing? Ham - mer ring, Ham - mer ring.